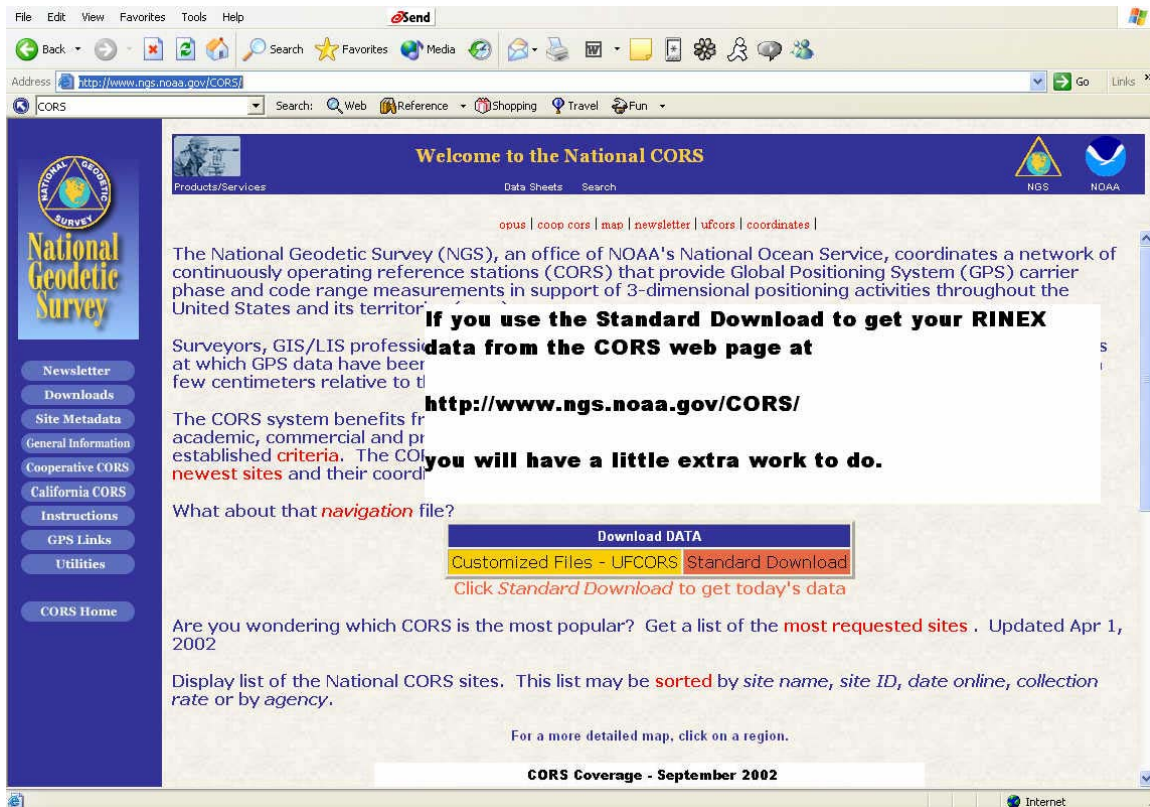


Working with the RINEX broadcast orbits file

Or

What do I do with this bird file?!?!?!?



The screenshot shows the National CORS website in a web browser. The page has a blue header with the text "Welcome to the National CORS" and logos for NGS and NOAA. A left sidebar contains a "National Geodetic Survey" logo and a list of links: Newsletter, Downloads, Site Metadata, General Information, Cooperative CORS, California CORS, Instructions, GPS Links, Utilities, and CORS Home. The main content area includes a paragraph about the NGS network, a highlighted box with the text "If you use the Standard Download to get your RINEX data from the CORS web page at http://www.ngs.noaa.gov/CORS/ you will have a little extra work to do.", and a "Download DATA" section with buttons for "Customized Files - UFCORS" and "Standard Download". Below this is a link to "Click Standard Download to get today's data". Further down, there is a section for "most requested sites" and a "CORS Coverage - September 2002" map area.

sort by state - sort by city - sort by site ID		
SITE (sorted by state)	OPTION	YEAR
CA Minaret Summit, MINS	RINEX2 Data	2002
CA Monument Peak, MONP	Data Availability	
CA Mount Hamilton, MHCB	Data Sheet	
CA Fremont, ZOA1	Coordinates (NAD83 & ITRF)	
CA Fremont, ZOA2	Logfile (Site logs)	
CA Fremont, ZOA3	Local Map	
CA Petaluma, PET1 (OFFLINE 97APR08)		
CA Pinyon Flat, PIN1		
CA Pigeon Point, PPT1		
CA Pigeon Point, PPT2		
CA Point Arguello, PAR1 (OFFLINE 99FEB05)		
CA Point Blunt, PBL1		
CA Point Blunt, PBL2		
CA Point Loma, PLO1 (OFFLINE 96SEP06)		

I choose RINEX2 data for PPT1 for October 22, 2002.

Enter Day of Year (e.g. 2, 93, 365) **Find Files**

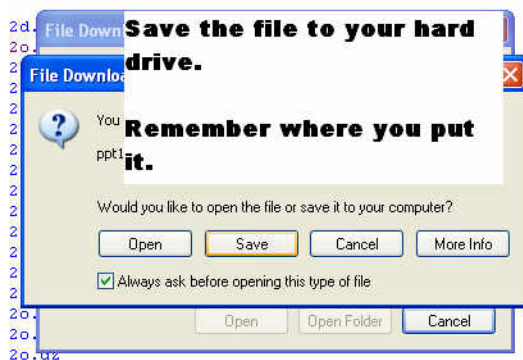
This will override the Month and Day boxes if selected!

```

Up to higher level directory

10/23/2002 04:40AM      Directory .
10/26/2002 10:02AM      Directory ..
10/23/2002 04:40AM      404,634 ppt12950.02d.Z
10/23/2002 04:40AM      871,666 ppt12950.02o.gz
10/22/2002 01:15AM      38,866 ppt1295a.02o.gz
10/22/2002 02:15AM      30,222 ppt1295b.02o.gz
10/22/2002 03:15AM      36,845 ppt1295c.02o.gz
10/22/2002 04:15AM      30,895 ppt1295d.02o.gz
10/22/2002 05:15AM      26,523 ppt1295e.02o.gz
10/22/2002 06:15AM      40,270 ppt1295f.02o.gz
10/22/2002 07:15AM      39,465 ppt1295g.02o.gz
10/22/2002 08:15AM      36,844 ppt1295h.02o.gz
10/22/2002 09:15AM      53,410 ppt1295i.02o.gz
10/22/2002 10:15AM      51,082 ppt1295j.02o.gz
10/22/2002 11:15AM      40,535 ppt1295k.02o.gz
10/2      31,02o.gz
10/2      3m.02o.gz
10/2      3n.02o.gz
10/2      3o.02o.gz
10/2      3p.02o.gz
10/2      3q.02o.gz
10/2      3r.02o.gz
10/22/2002 07:15PM      35,329 ppt1295s.02o.gz
10/22/2002 08:15PM      48,064 ppt1295t.02o.gz
10/22/2002 09:15PM      49,242 ppt1295u.02o.gz
10/22/2002 10:15PM      34,275 ppt1295v.02o.gz
10/22/2002 11:15PM      46,946 ppt1295w.02o.gz
10/23/2002 12:15AM      42,860 ppt1295x.02o.gz

```



Up to higher level directory

**After you have downloaded the o
file(s) you want it is time to click
on**

Up to higher level directory

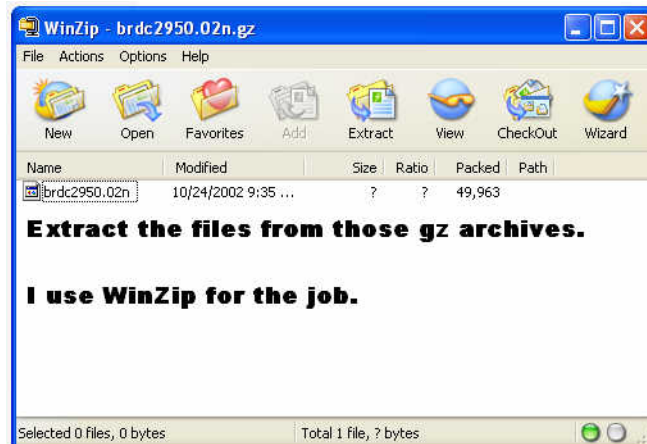
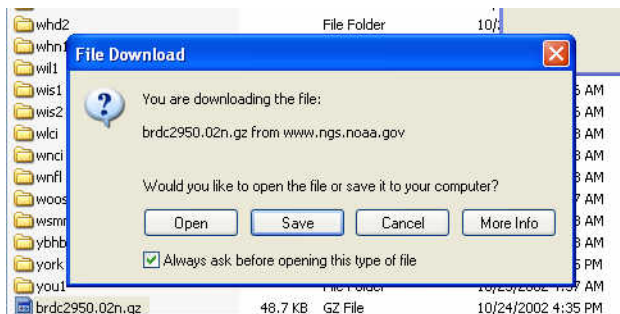
whd1
whd2
whn1
wll1
wis1
wis2
wlci
wncl
wnfl
woos
wsmn
ybbh
york
you1

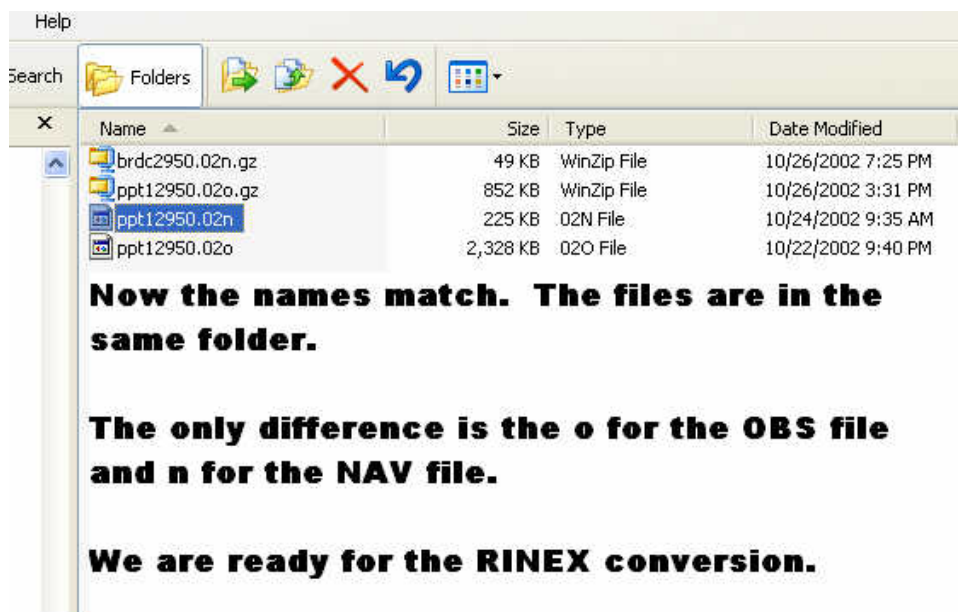
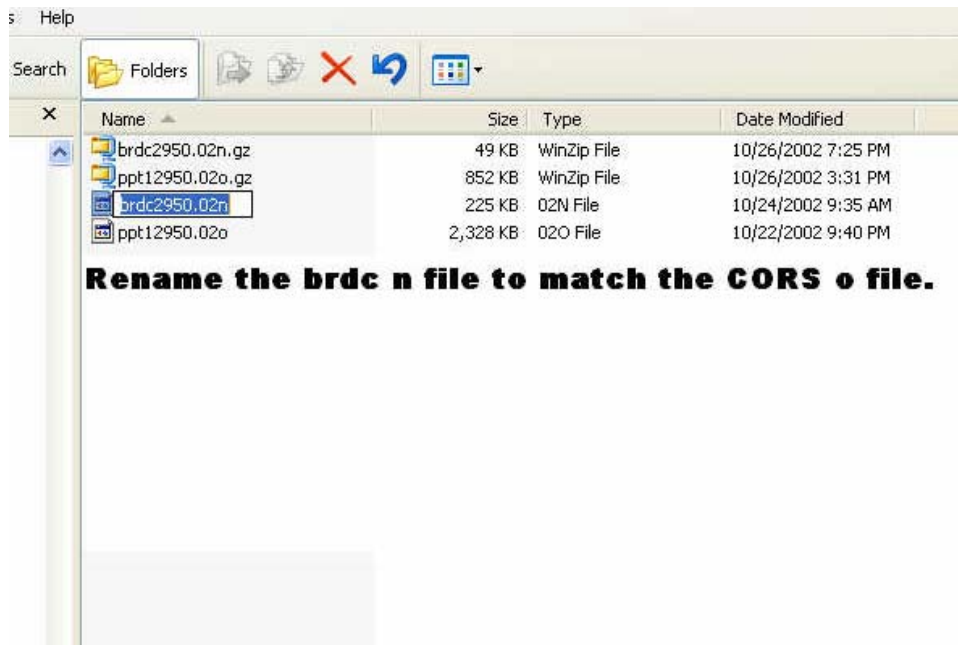
Scroll all the way to the bottom of the list of CORS file folders for that day.

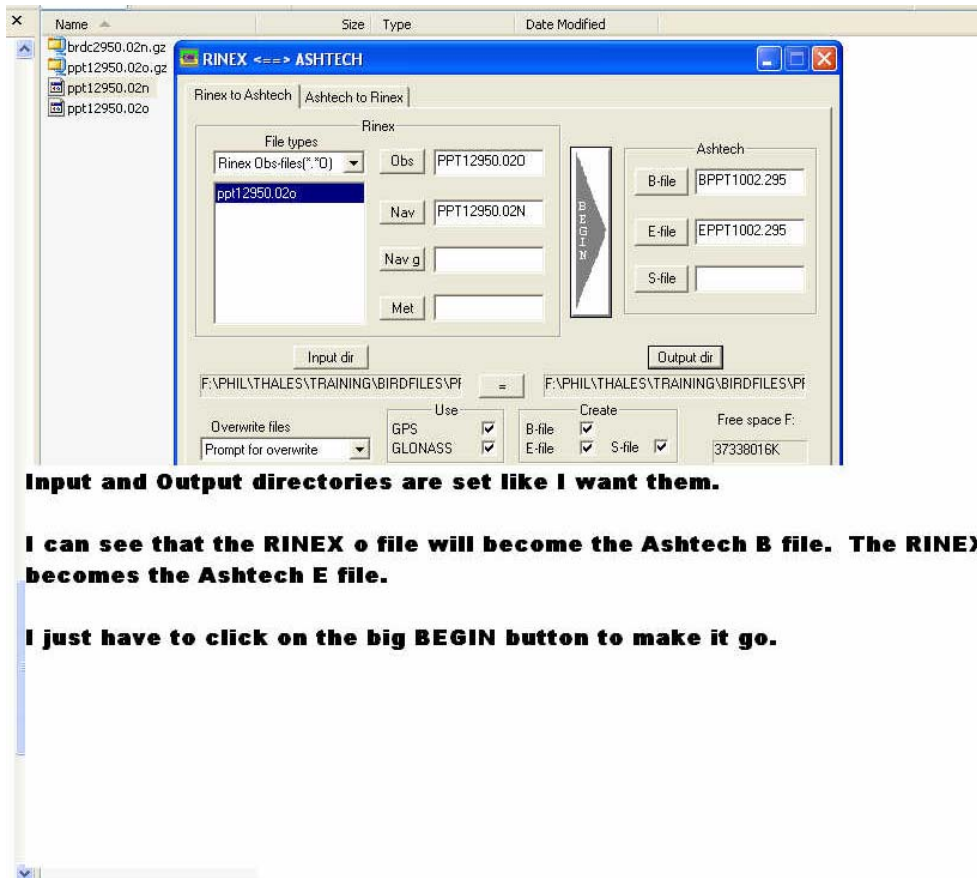
Find the broadcast orbits file for day 295.

It is the n file to go with our o file.

brdc2950.02n.gz	48.7 KB	GZ File	10/24/2002 4:35 PM
lgr11892.sp3.gz	69.5 KB	GZ File	10/23/2002 5:20 PM
lgu11892_00.sp3.gz	132 KB	GZ File	10/23/2002 2:10 AM
lgu11892_12.sp3.gz	132 KB	GZ File	10/23/2002 2:10 AM



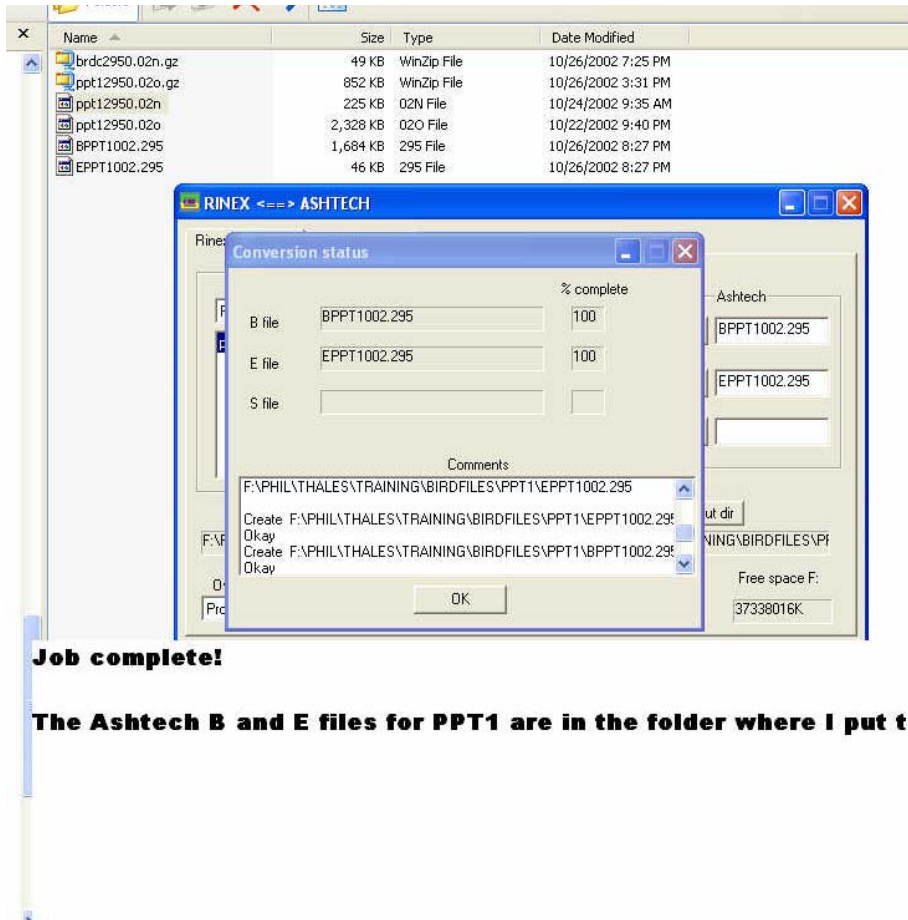




Input and Output directories are set like I want them.

I can see that the RINEX o file will become the Ashtech B file. The RINEX n file becomes the Ashtech E file.

I just have to click on the big BEGIN button to make it go.



Job complete!

The Ashtech B and E files for PPT1 are in the folder where I put them.